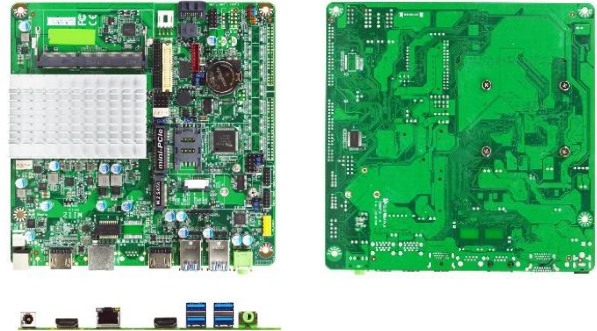


MI12-00L Series

Intel® Apollo Lake SoC Processor, DDR3L up to 8GB, 1 GbE, 2* HDMI, 1* LVDS, 1* eDP, 2* COM*

1. Intel® Apollo Lake series SoC Processor. (Default J3455)
2. 1* DDR3L 1866MHz SO-DIMM up to 8GB
3. 1* Realtek RTL8111H GbE
4. 2* HDMI, 1* LVDS, 1* eDP, support triple displays
5. 2* COM, 4* USB3.0, 2* USB2.0
6. 1* Mini PCIe, 1* SIM card slot
7. 1* SATAIII, 1* M.2 (M-key, 2242/2260), 1* 32GB eMMC (option)
8. 12V DC-in



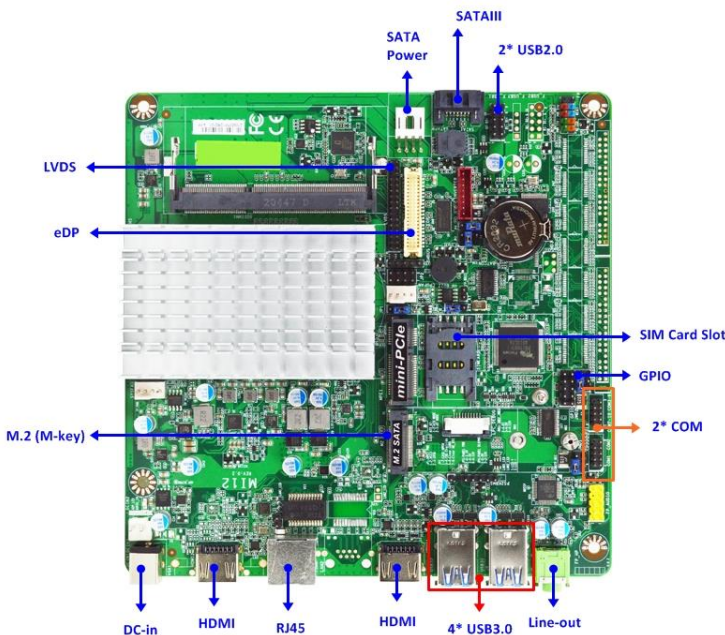
Overview

The JETWAY MI12-00L series are Slim Mini-ITX form factor board adopts the Intel® Apollo Lake SoC Processor. The board supports DDR3L 1866MHz SO-DIMM memory, up to 8GB. Featuring the integrated Realtek Gigabit Ethernet controller, the MI12-00L offers 10/100/1000Base-TX Ethernet device for network transmission. SATAIII (6Gb/s) interface, one M.2 (M-key, 2242/2260) and 32GB eMMC (option) offer storage devices. One Mini PCIe interface, four USB3.0 ports, two USB2.0 ports and two COM ports provide versatile expansion. The MI12-00L series offers eDP interface which can support Max. 4K@60Hz resolution. Because of the above features, MI12-00L series is one of the best selections for digital signage and automation applications.

Application

Digital Signage / POS / KIOSK / Industrial Automation

I/O Diagram



Mechanical Drawings (Unit = mm)

Specifications

Model	Form Factor
<ul style="list-style-type: none">MI02-00LMI02-02L (W/TPM2.0)	Slim Mini-ITX (6.7-in * 6.7-in, 170 * 170mm)
Processor System	Expansion Slot
<ul style="list-style-type: none">Intel® Apollo Lake SoC ProcessorIntel® J3455 SoC chipsetAMI 128Mb Flash ROM BIOS	<ul style="list-style-type: none">1* Mini PCIe (full size, USB signal only)1* SIM card slot
Memory	Graphics
1* DDR3L 1866MHz SDRAM SO-DIMM up to 8GB	<ul style="list-style-type: none">Intel® HD Graphics2* HDMI (Max. Resolution: 3840 x 2160@30Hz)1* LVDS (Max. Resolution: 1920 x 1200@60Hz, selectable with eDP, not working while using LVDS)1* eDP (Max Resolution: 4096 × 2160@60Hz, selectable with LVDS, not working while using eDP)Support triple displays
Ethernet	Audio
1* Realtek RTL8111H GbE	C-Media HS-100B USB Audio Chip
Storage	Rear I/O
<ul style="list-style-type: none">1* SATAIII (6.0Gb/s)1* M.2 M-key 2242/2260 (SATA interface)32GB eMMC (option) eMMC is recommend to set as primary boot device for Windows 10 OS boot up	<ul style="list-style-type: none">1* RJ454* USB3.02* HDMI1* Line-out1* DC-in jack
Internal Connector	Watchdog Timer
<ul style="list-style-type: none">2* USB2.02* RS232 (COM1~2 with Powered 5V/12V)1* SATAIII1* Mini PCIe (full size)1* M.2 M-key 2242/22601* LVDS (Selectable with eDP, not working while using LVDS)1* eDP (Selectable with LVDS, not working while using eDP)1* GPIO (4in/4 out)1* SMBUS1* AT mode1* SIM card slot1* PS/21* TPM2.0 (MI12-02L only)	<ul style="list-style-type: none">From Super I/O to drag RESETCON#256 segments, 0,1,2...255sec
Power	Compliance
12V DC-in, AT/ATX Mode Supported - AT: Directly PWR on as Power input ready - ATX: Press Button to PWR on after Power input ready	CE, FCC, RoHS, REACH
Temperature	OS Support
<ul style="list-style-type: none">Operating: 0°C ~ 60°C (with 0.7m/s air flow)Storage: -20°C ~ 85°CHumidity: 10% ~ 90% RH @40°C (non-condensing)	Windows 10, Linux
Warranty	
2 Years Limited Warranty	

* Specifications subject to change without notice, not responsible for typographical errors. Does not include HDD or OS.

Accessories

Parts Number	Description	Parts Number	Description
-----	MI02-00L Series M/B	G01-COM-H2M22-1F	COM cable
F04-MB-069-F	I/O shield		